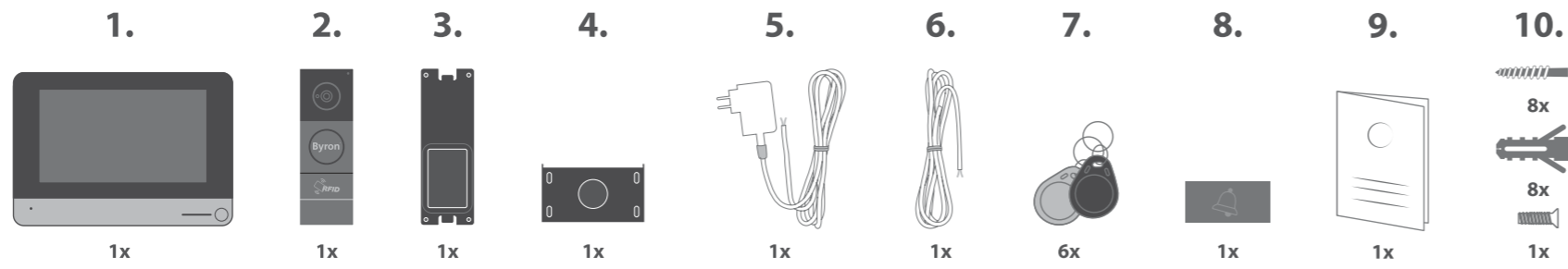


2. PARTS DESCRIPTION

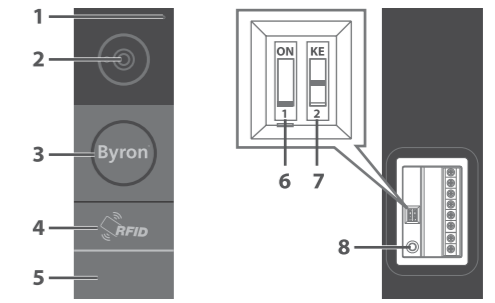
2.1 BOX CONTENT | INHALT | CONTENUS | INHOUD DOOS | CONTENUTO | CONTENIDO DE LA CAJA



2.2 MONITOR

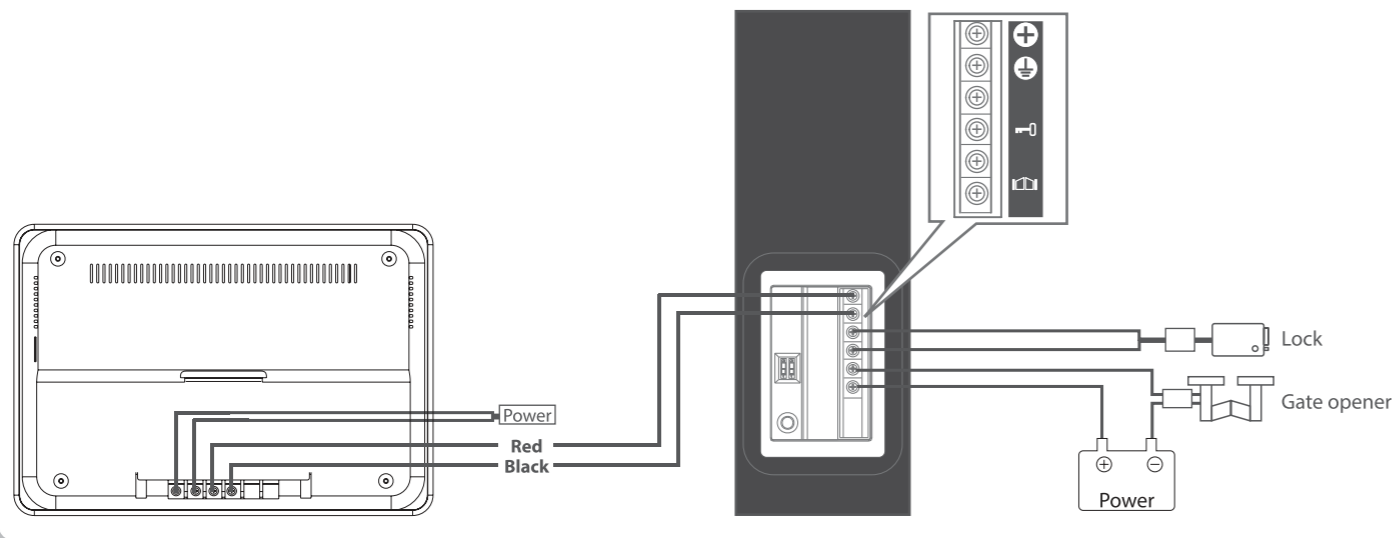


2.3 OUTDOOR UNIT (DOORBELL)

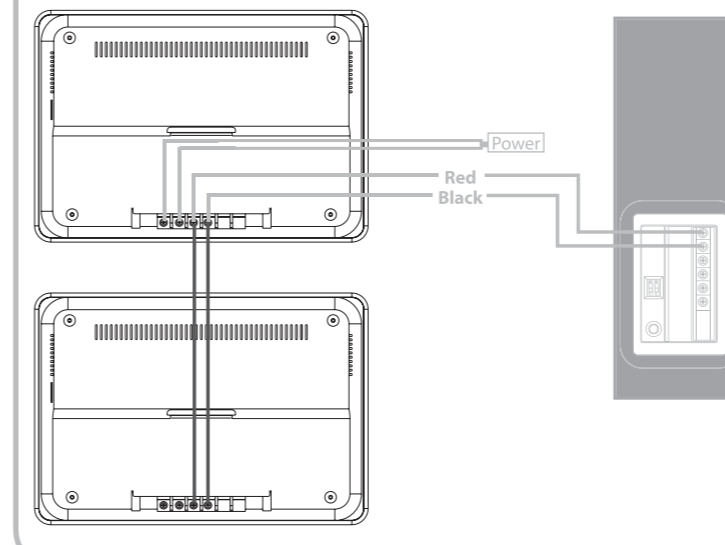


3. INSTALLATION

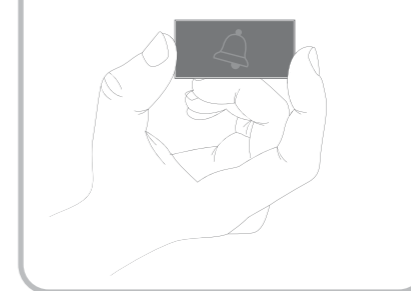
3.1 ELECTRICAL INSTALLATION



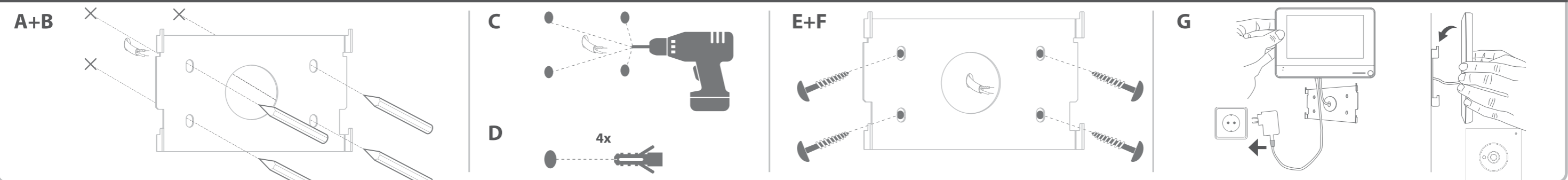
3.3 CONNECTING AN ADDITIONAL INDOOR UNIT



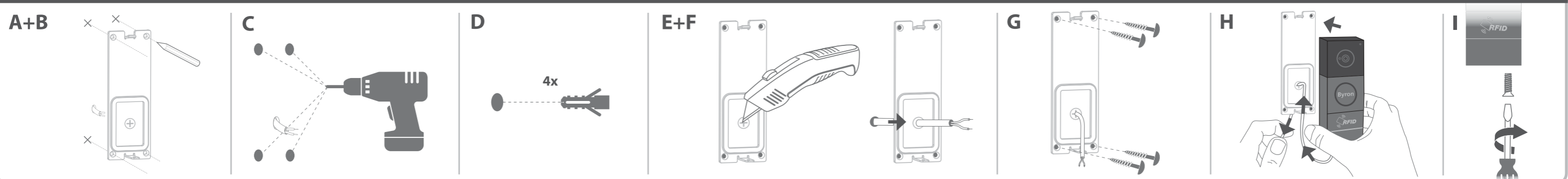
3.8 REPLACE CALL BUTTON



3.4 MOUNTING THE MONITOR



3.5 MOUNTING THE OUTDOOR UNIT (DOORBELL)



4. PREPARATION BEFORE USE

CONNECTING THE INDOOR UNIT (MONITOR) TO WI-FI

5. BYHOME APP

APP INSTALLATION

A+B **Android** iOS C

or

BYHOME

CREATING AN ACCOUNT

A

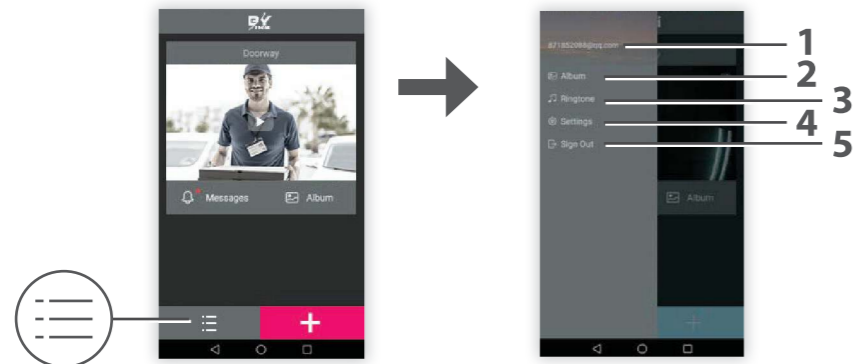
B-E

F+G

ADD A DEVICE

6. USING THE APP

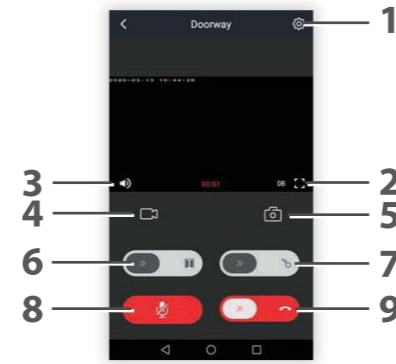
6.1 APP SETTINGS



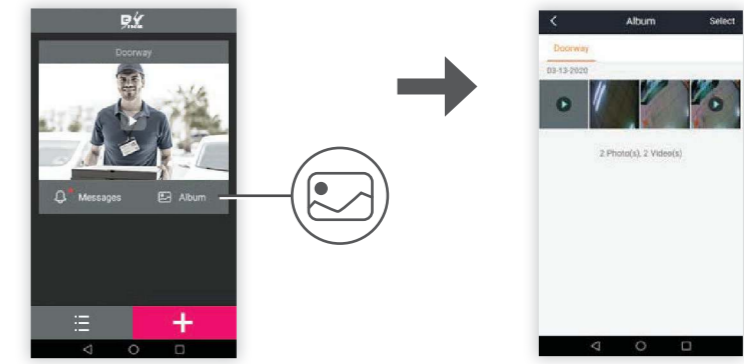
6.2 OPERATION



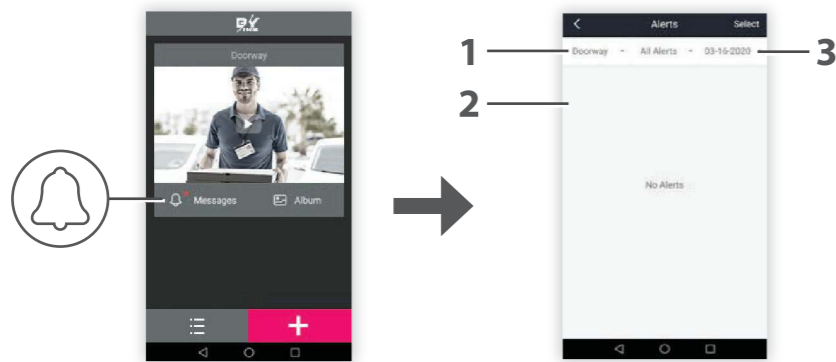
6.3 INTERCOM



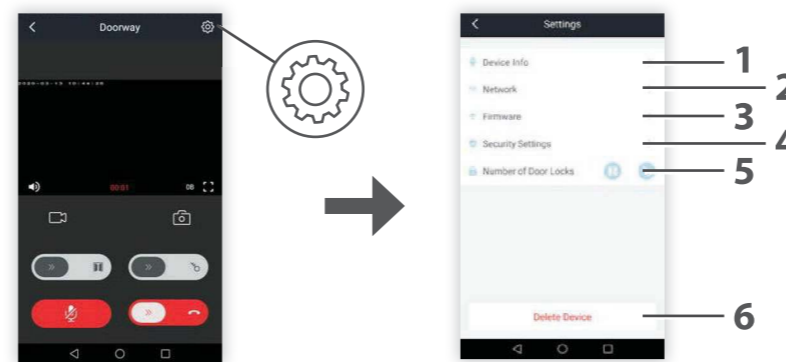
6.4 ALBUM



6.5 NOTIFICATIONS



6.6 DEVICE SETTINGS



7. BASIC FUNCTIONS INDOOR UNIT (MONITOR)

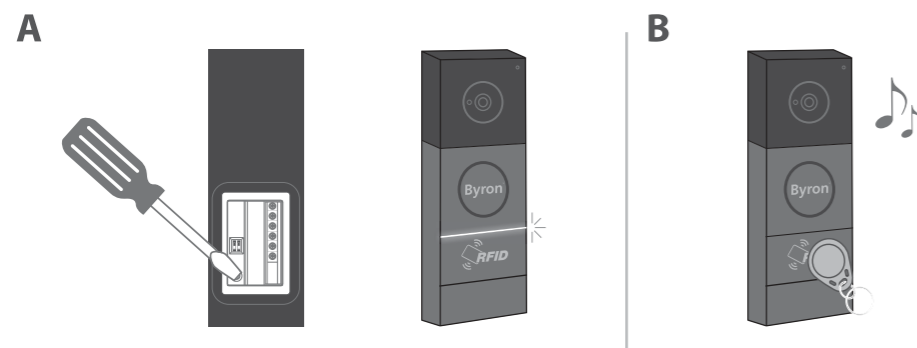
7.1 UNLOCKING YOUR DOOR OR GATE



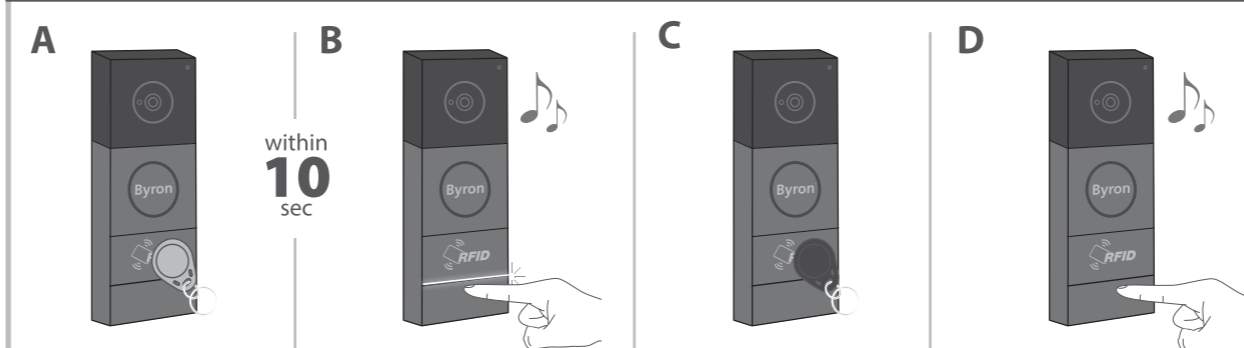
7.2 ANSWERING A CALL



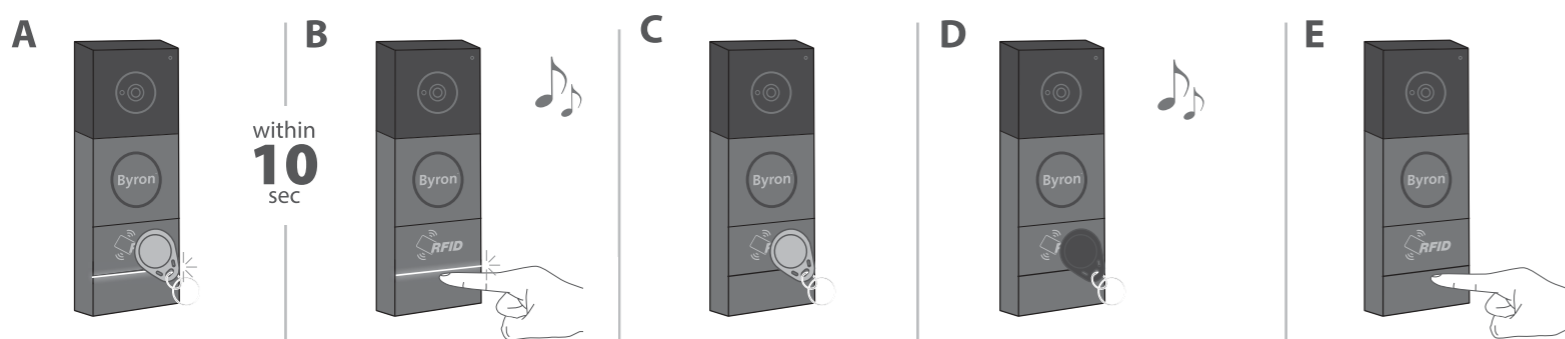
7.3.1 REGISTERING AN ADMINISTRATOR TAG



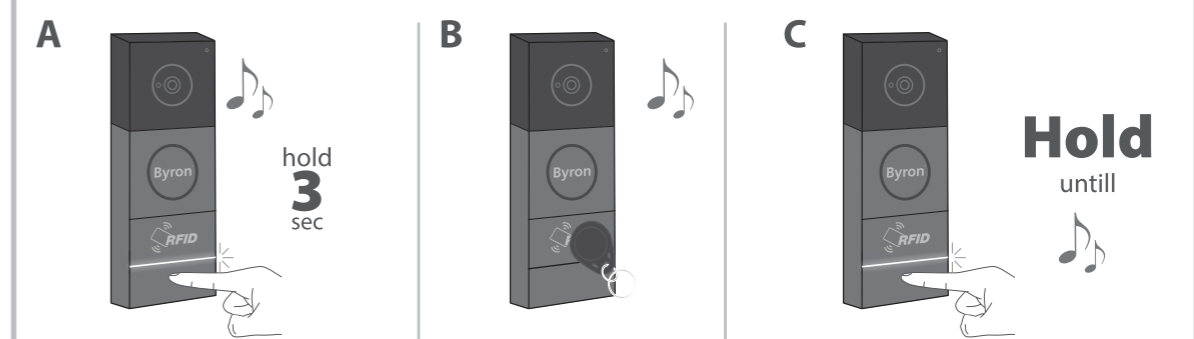
7.3.2 REGISTERING A USER TAG



7.4 CANCELLING A RFID TAG



7.5 CANCELING ALL RFID TAGS



8. HOME SCREEN AND MENUS

