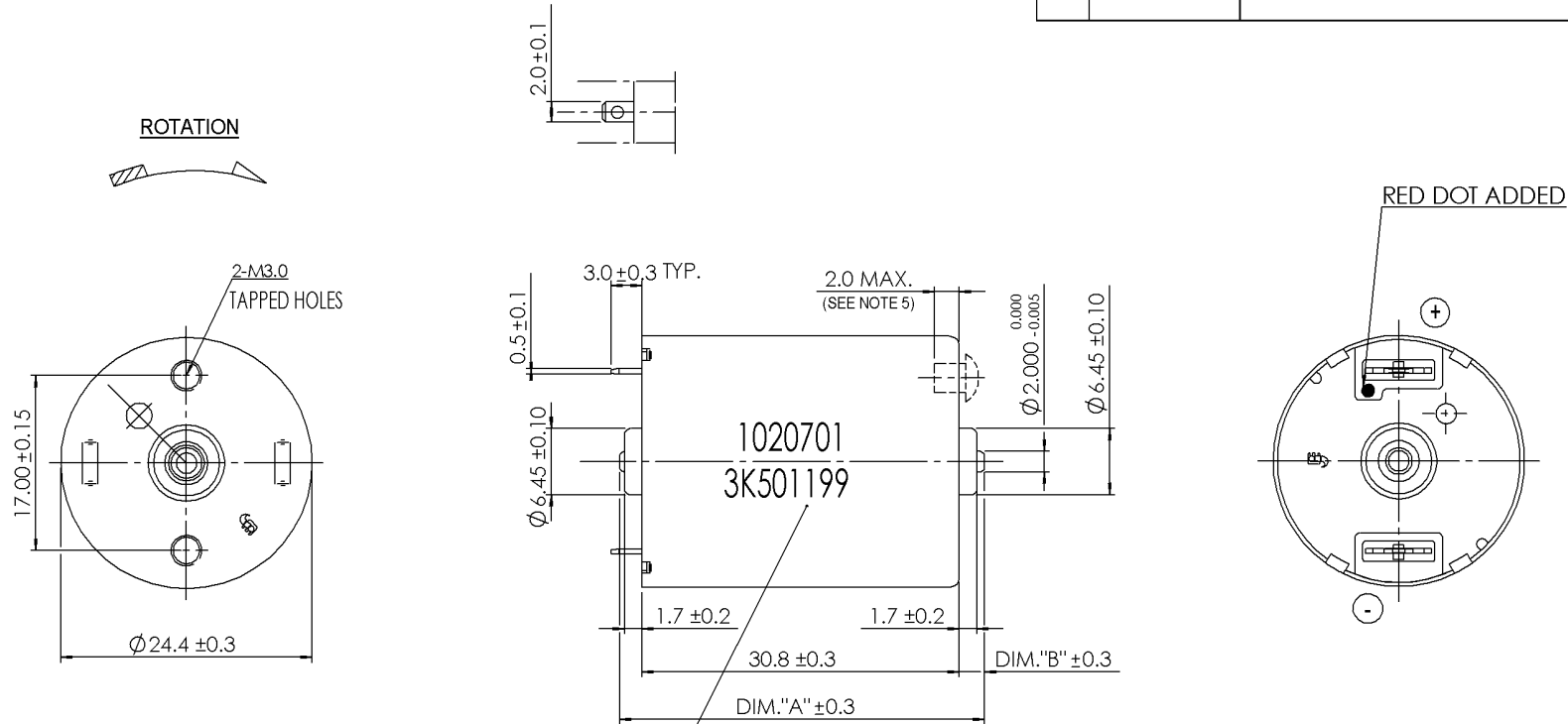


ALL.	REF.	DESCRIPTION	DATE	BY
A		Initial release	20090527	JL YANG



DIRECT PRINT MOTOR CODE & DATE CODE ONTO REAR HOUSING. DATE CODE FORMAT AS ESDC-038.

- NOTES :
1. LENGTH OF SHAFT, DIM."A" 35.0 mm.
  2. FRONT EXTENSION, DIM."B" 2.55 mm., MEASURED WITH SHAFT PUSHED AGAINST END CAP SIDE.
  3. ROTATION : CLOCKWISE WHEN VIEWING SHAFT OUTPUT END WITH POSITIVE VOLTAGE APPLIED TO POSITIVE TERMINAL.
  4. END PLAY : 0.35 mm MAX. WITH 2.5~3.0kg PUSH FORCE FROM ER OF SHAFT
  5. TAPPED HOLES CAN ACCEPT MAX. MALE USABLE SCREW LENGTH OF 2.0 mm.

The assembler incorporating this motor into an apparatus, has to ensure that his apparatus meets the appropriate local, national or international standards, directives and specification for EMC. Johnson Electric is prepared to assist the assembler in solving potential EMC problems.

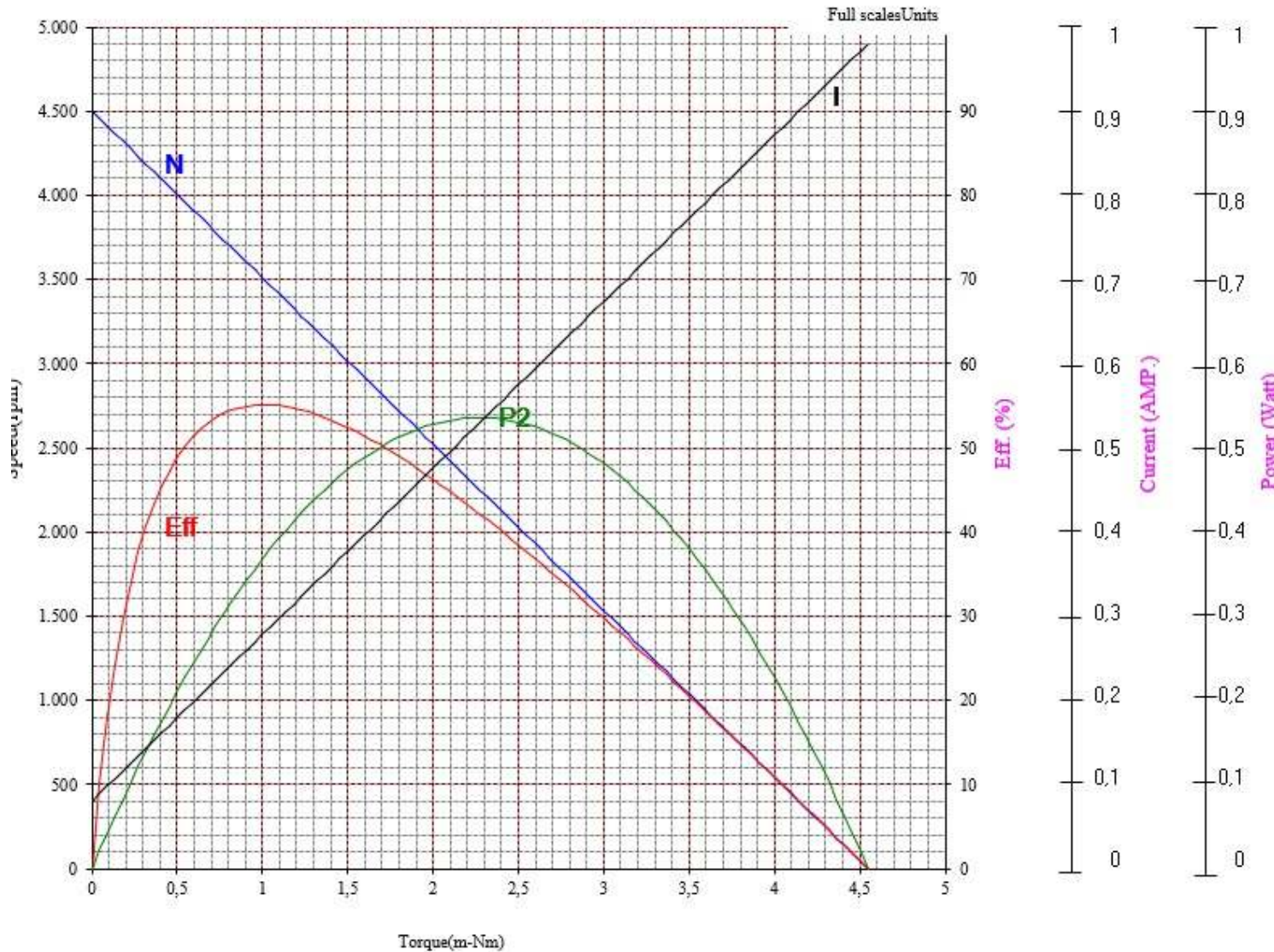
DWN. BY JL YANG	CHK. BY	APP. BY
Date (yyyymmdd) 20090527	Date (yyyymmdd)	Date (yyyymmdd)

<table border="1"> <thead> <tr> <th>Cpk</th> <th>Characteristics</th> <th>Key Product</th> <th>Customer Significant</th> </tr> </thead> <tbody> <tr> <td>&gt; 1.67</td> <td>●</td> <td>■</td> <td>■</td> </tr> <tr> <td>&gt; 1.33</td> <td>●</td> <td>■</td> <td>■</td> </tr> <tr> <td>&gt; 1.00</td> <td>●</td> <td>■</td> <td>■</td> </tr> <tr> <td>Not Required</td> <td>●</td> <td>■</td> <td>■</td> </tr> </tbody> </table>	Cpk	Characteristics	Key Product	Customer Significant	> 1.67	●	■	■	> 1.33	●	■	■	> 1.00	●	■	■	Not Required	●	■	■	<b>MATERIAL :</b> FINISH : General Tolerance : ISO 2768-1 Class m (Unless specified) JOHNSON ELECTRIC JOHNSON ELECTRIC GROUP OF COMPANIES ("JOHNSON ELECTRIC") This document is the Property of Johnson Electric and the information therein contains confidential, unauthorised reproduction or other use thereof, whether directly or indirectly, in whole or in part, is strictly prohibited. All products made or otherwise derived directly or indirectly from this document are proprietary to Johnson Electric. © Copyright Johnson Electric S. A. 2009. All rights reserved.	ALL DIMENSIONS ARE IN MILLIMETRES SCALE 2:1 TITLE MOTOR OUTLINE (PC200LG) DWG No. 1999-1020701 SHEET 1 OF 1
	Cpk	Characteristics	Key Product	Customer Significant																		
> 1.67	●	■	■																			
> 1.33	●	■	■																			
> 1.00	●	■	■																			
Not Required	●	■	■																			

SOF NO : 1020701  
 Project No.: PC200LG  
 Winding : 0,00 - 0 T  
 Motor test reference no : CW

Date : 19.01.2022

Performance ( in an ambient temperature of 23°C)  
 Motor tested rapidly to prevent significant temperature rise.  
 At a constant voltage of 2,40 Volts  
 With a circuit resistance of 0.720 Ohm



<b>At No Load</b>	
Speed :	4500 Rpm
Current :	0,080 Amp
<b>At stall (Extrapolated)</b>	
Torque :	4,55 m-Nm
Current :	0,98 Amp
<b>At maximum efficiency</b>	
Efficiency :	55,13 %
Torque :	1,01 m-Nm
Speed :	3500 Rpm
Current :	0,28 Amp
Output :	0,37 Watts
<b>At maximum power</b>	
Torque :	2,27 m-Nm
Speed :	2250 Rpm
Current :	0,53 Amp
Output :	0,54 Watts

<b>Characteristics</b>	
Torque Constant :	5,054 m-Nm/Amp
E.M.F Constant :	5,054 mV/rad/sec
Dy. Resistance :	2,449 Ohms
Motor Regulation:	989,399 Rpm/m-Nm

<b>At torque level:</b>	
Torque:	m-Nm

COMPUTER PRINT-OUT NOMINAL MOTOR CURVES.  
 Performance and characteristics are measured based on limited motor samples only.