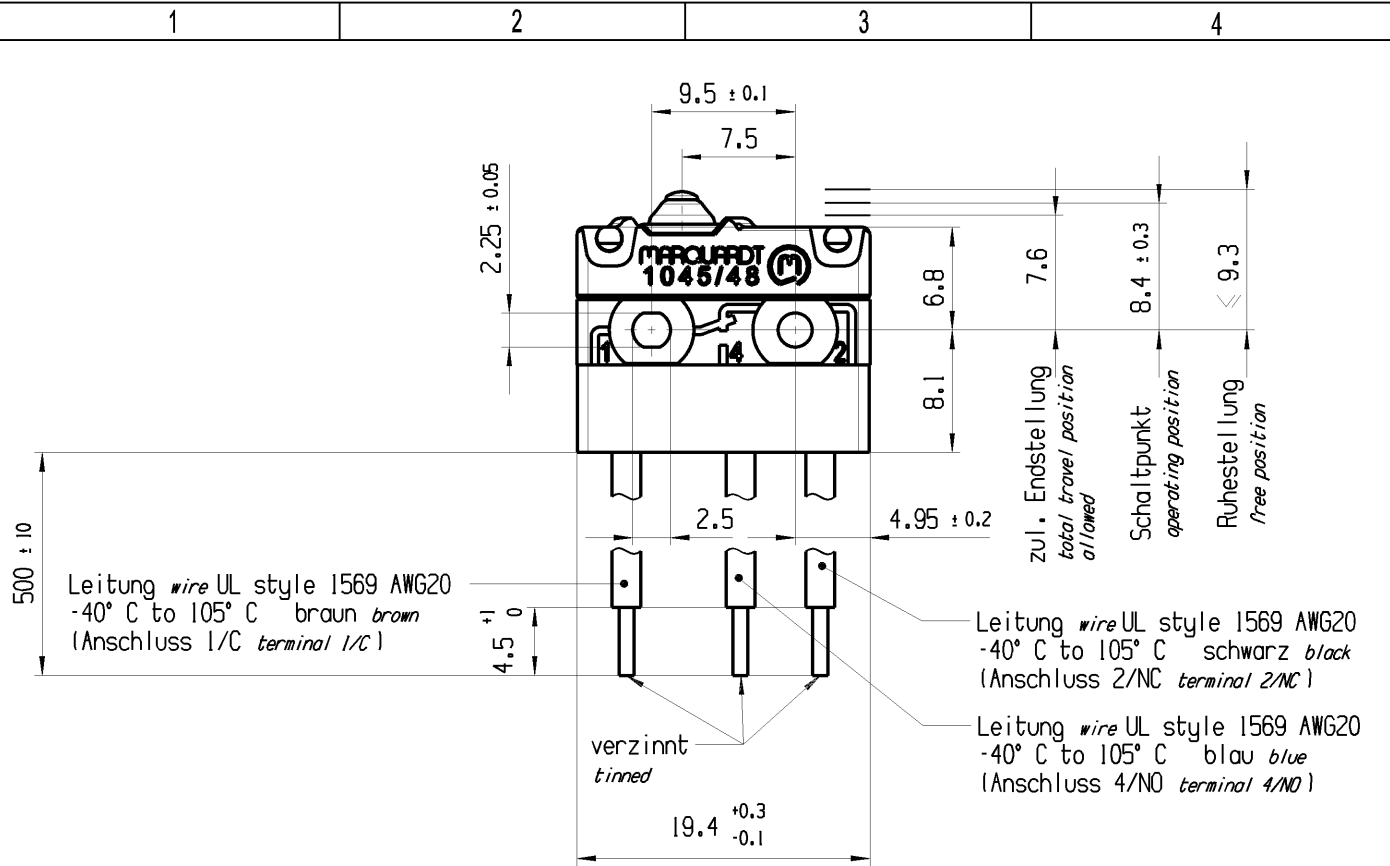



CONFIDENTIAL

VERTRAULICH

THIS DRAWING IS THE EXCLUSIVE PROPERTY OF MARQUARDT. WITHOUT THEIR CONSENT IT MAY NOT BE REPRODUCED OR GIVEN TO THIRD PARTIES.

Alle Rechte bei Marquardt, auch fuer den Fall von Schutzrechtsanmeldungen. Jede Veruegungsbefugnis, wie Kopier- und Weitergaberecht, bei uns.





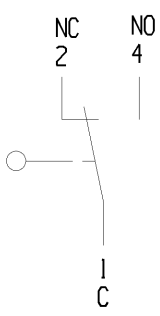
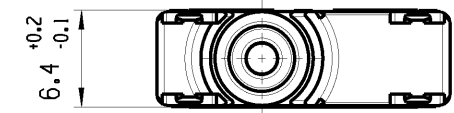
Aufschrift
Marking
MARQUARDT 
1045/48

IA 250V AC
IE5   US LISTED

μ
Herstellungscod:
Ort/Jahr/Monat/Tag
Code of manufacture:
place/year/month/day

Herstellort & datum
fuer Anschlussverguess
Place and datecode of
terminal potting

Auf Verpackung/ on box: G
  US LISTED



Wechsler 1-polig
Kontakte vergoldet
single pole changeover
contacts gold plated

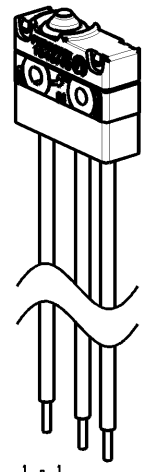
Schaltbetaetigungskraft
actuating force ≤ 1.9 N

Rueckschaltkraft
release force ≥ 0.5 N

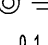
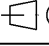

Differenzweg
movement differential ≤ 0.2 mm

IP Schutzklasse nach EN 60529 IP 67
protection class acc to EN 60529

G= Konform nach IEC 60335-1:2001 Kap. 30
G= matching IEC 60335-1:2001 clause 30



1:1

-	---	---	1048.2151-XX																																		
Figure	Type	Customer No.	Art.No.-PI																																		
Shape and location	Angle ± 2°	Sheet 01	Ident. K																																		
	Edge tolerance	Format DIN A4	Document number 10482151																																		
 0.1	<table border="1"> <thead> <tr> <th rowspan="2">Length</th> <th colspan="2">Length</th> <th colspan="2">Radii</th> </tr> <tr> <th>0-6</th> <th>>6-15</th> <th>0-6</th> <th>>6-15</th> </tr> </thead> <tbody> <tr> <td>>15-30</td> <td>± 0.1</td> <td>± 0.15</td> <td>± 0.2</td> <td>± 0.3</td> </tr> <tr> <td>>30-70</td> <td>± 0.2</td> <td>± 0.2</td> <td>± 0.5</td> <td>± 0.5</td> </tr> <tr> <td>>70-120</td> <td>± 0.3</td> <td>± 0.3</td> <td>± 10%</td> <td>± 10%</td> </tr> <tr> <td>>120-200</td> <td>± 0.4</td> <td>± 0.4</td> <td>±</td> <td>±</td> </tr> <tr> <td>>200</td> <td>± 0.8</td> <td>± 0.8</td> <td>±</td> <td>±</td> </tr> </tbody> </table>	Length	Length		Radii		0-6	>6-15	0-6	>6-15	>15-30	± 0.1	± 0.15	± 0.2	± 0.3	>30-70	± 0.2	± 0.2	± 0.5	± 0.5	>70-120	± 0.3	± 0.3	± 10%	± 10%	>120-200	± 0.4	± 0.4	±	±	>200	± 0.8	± 0.8	±	±	Projection 	Scale 2:1
	Length		Length		Radii																																
0-6		>6-15	0-6	>6-15																																	
>15-30	± 0.1	± 0.15	± 0.2	± 0.3																																	
>30-70	± 0.2	± 0.2	± 0.5	± 0.5																																	
>70-120	± 0.3	± 0.3	± 10%	± 10%																																	
>120-200	± 0.4	± 0.4	±	±																																	
>200	± 0.8	± 0.8	±	±																																	
d	136255	2021-02-19	HHE																																		
c	130794	2020-03-10	HHE																																		
b	128229	2019-09-24	LEK																																		
a	80327	2013-03-20	BRC																																		
Index	MEC-No.	Date (YYYY-MM-DD)	Edited by																																		
All dimensions are in millimetres		Snap action switch																																			
System NX V11.0		 MARQUARDT																																			
Replacement of																																					