

SPECIFICATION:

Operating Current (Nom.): 1 A
 Operating Temperature: -40°C to 105°C
 Insulation Resistance (Min.): 1000 MΩ
 Contact Resistance (Max.): 15 mΩ
 Dielectric Strength: 500 Vac

MATERIAL:

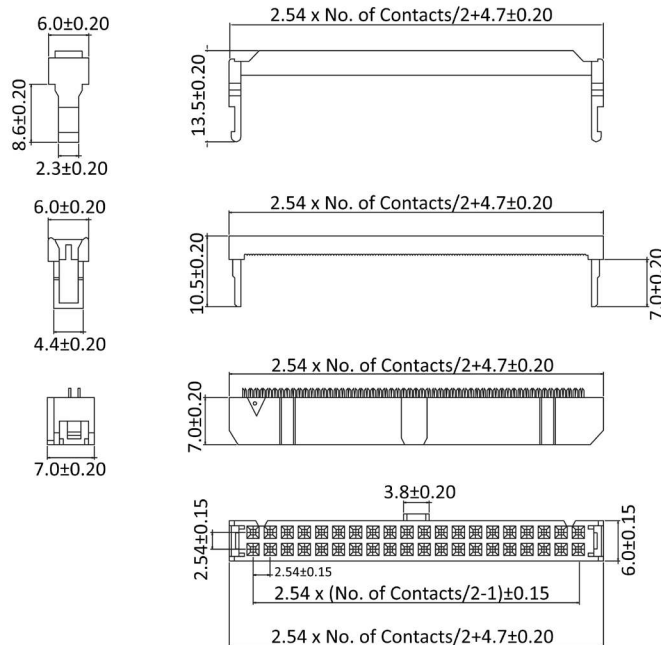
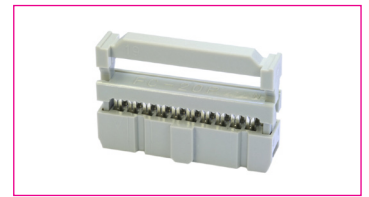
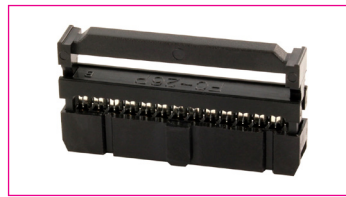
Material (Terminal): brass
 Material (Housing): PBT
 Flammability Class: UL 94 V-0
 Material (Contact Area): bronze, gold plated

HANDLING:

Packaging: tray

TOLERANCE:

.X: ± 0.15
 .XX: ± 0.10



Order Information

| Identifier: | No. of Contacts: | Colour: |
|--------------------------|------------------|--------------|
| PV | # | # |
| IDC socket pitch 2.54 mm | 6: 2 x 3 | empty: black |
| | 8: 2 x 4 | GR: grey |
| | 10: 2 x 5 | |
| | 14: 2 x 7 | |
| | 16: 2 x 8 | |
| | 20: 2 x 10 | |
| | 24: 2 x 12 | |
| | 26: 2 x 13 | |
| | 34: 2 x 17 | |
| | 40: 2 x 20 | |
| | 50: 2 x 25 | |
| | 60: 2 x 30 | |
| | 64: 2 x 32 | |